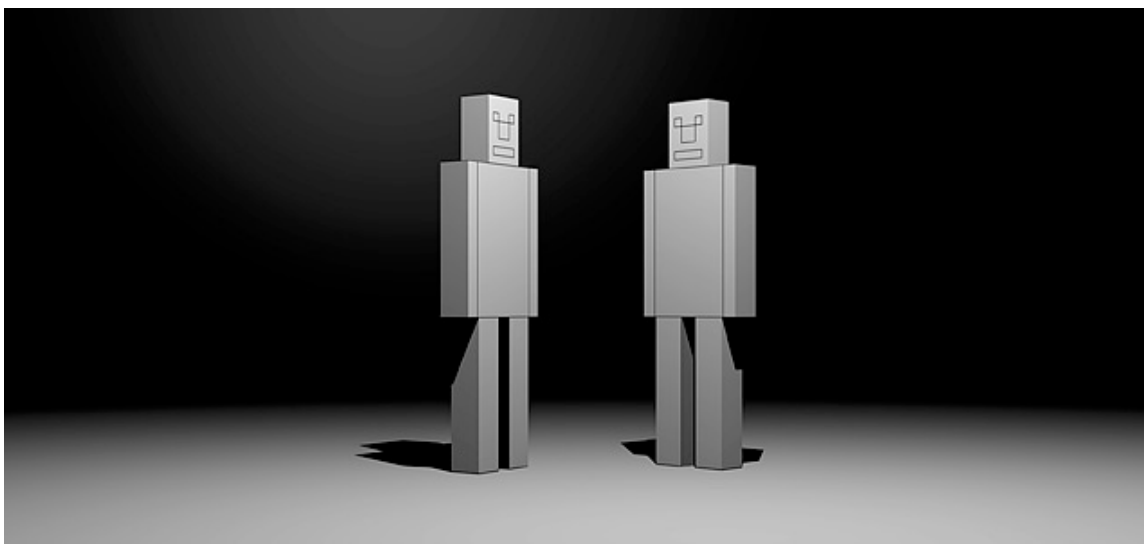


CONTACT: Christopher Lynn, Director  
OFFICE: 719.262.3567 / 719.262.3504  
FAX: 719.262.3183  
EMAIL: [clynn@uccs.edu](mailto:clynn@uccs.edu) / [gallery@uccs.edu](mailto:gallery@uccs.edu)  
WEBISTE: [www.galleryuccs.org](http://www.galleryuccs.org)

**For Immediate Release  
Upcoming Exhibition**



Dario Šolman, *The Heart of Perspective, The Making of the Film: Broken (detail)*, 2003, Animation / Video, 5:49 min, courtesy of the artist

## DARIO ŠOLMAN

### THE HEART OF PERSPECTIVE, THE MAKING OF THE FILM

Exhibition Dates: February 22 - April 5, 2008

Opening Reception: Friday, February 22, 2008

Supporter Reception: 5:30 - 7:00 p.m.

Public Reception: 7:00 - 9:00 p.m.

Location: Gallery of Contemporary, UCCS

Tags: Contemporary Art, Artist, Dario Šolman, Croatia, New York, video art, animation, film, drawing, opening reception

**Colorado Springs, January 14, 2008** – The Gallery of Contemporary Art, UCCS presents ***Dario Šolman: The Heart of Perspective, The Making of the Film*** opening February 22. Šolman, a Croatian artist living and working in New York, creates mysterious drawings and animations that center around a geometric protagonist in search of the heart of perspective.

Dario Šolman's *The Heart of Perspective, The Making of the Film* is an ongoing project begun in 2001 that consists of texts, studies and tests for a film that will never be made. He has stated, "When we use the word 'film,' we think of a possible film, a hypothetic interplay of image, sound and text. To avoid further confusion, we should think of it as film without a film. In other words, a film space that is not contained in a film shell." Šolman uses the terms Cinemation, Pseudo-film or Secondary-Cinema to refer to his practice of filmmaking without making a film. Šolman says, "Pseudo-film will stop at an earlier, infantile phase of the film production; at the stage where we can sense the full potential of the film medium and its multimedia layers, but before the narrative has organized thematic units into a dramaturgical whole."

The cube-like figures that dominate the work are found engaged in activities that are at times eerily entrancing and endearing: two figures have a robotic conversation about love, one repeatedly bangs its head against the wall, a room full of figures spontaneously combust, and more are dropped mercilessly into an empty pool. This geometric figure seems to act as a proxy for a more “human” being – an animated stand-in for a real person. However, at other times, human figures stand in for the geometric protagonist and even worship it. The blocky figure is both a perfect, Platonic being and an imperfect, simplified human.

A significant portion of the work was created during two New York studio programs: the P.S.1 International Studio Program and Workspace: Lower Manhattan Cultural Council. Through these two residencies, the New York cityscape became an integral part of Šolman’s project and a background to this pseudo-film.

“This exhibition sets a great precedence for the Gallery’s future. Solo exhibitions have rarely played a part in the Gallery’s history. Dario Solman is an outstanding new artist to start featuring in depth what is exciting and challenging in contemporary artists’ work,” says Gallery of Contemporary Art director Christopher Lynn. The Gallery of Contemporary Art will be exhibiting the drawings, storyboards, and animation fragments that orbit around the non-existent film, *The Heart of Perspective*.

## BIO

---

**Dario Šolman** is a Croatian living and working in New York. His work has been exhibited at The Drawing Center, New York; 20th Slavonia Bienalle, Galerija umjetnina, Osijek, Croatia; Museum of Modern and Contemporary Art, Rijeka, Croatia; House of Croatian Artists (HDLU), Zagreb, Croatia; Gallery MC / The Doors Art Foundation, New York; Merano Arte edificio Cassa di Risparmio, Merano, Italy; Liquidacion Total, Madrid, Spain; Swiss Institute-Contemporary Art, New York; P.S.1 Contemporary Art Center, New York; Centre Place, Melbourne, Australia; Space Lab, Cleveland; and Alexandria Biennale, Alexandria, Egypt. He has also participated in the prestigious Lower Manhattan Cultural Council Residency, Workspace: The Woolworth Building Studios, New York; the P.S.1 Studio Program, New York; and the residency at the Cimelice Castle, Czech Republic.

## EVENTS

---

### Pre-Show Appetizer

Thursday, February 7, 2008, 7:00 p.m.

Learn more about the artists and themes in the exhibition, *Dario Šolman: The Heart of Perspective, the Making of the Film*. Impress your family and amaze your friends with the insightful knowledge you will display at the opening reception – knowledge that you picked up weeks earlier at the Pre-Show Appetizer.

### Opening Reception

Friday, February 22, 2008

Supporter Reception: 5:30 - 7:00 p.m.

Public Reception: 7:00 - 9:00 p.m.

The artist Dario Šolman will be in conversation with Gallery Director Christopher Lynn during the Supporter Reception 5:30-7:00 p.m. with the discussion beginning at 6:00 p.m. At 7:00 p.m. the Gallery will open its doors to the public to enjoy food, drink and world-class art.

// Continued //

## **BLURBS/RADIO SPOTS**

---

### **15 Second Spot**

The Gallery of Contemporary Art, UCCS features the exhibition ***Dario Šolman: The Heart of Perspective, The Making of the Film***. Šolman, a Croatian artist living and working in New York, creates drawings and animations that hint at a film that will never be made. The exhibition runs February 22 - April 5, 2008 with a public reception February 22<sup>nd</sup> from 7 -9 p.m. For more information call 262-3567 or visit [www.galleryuccs.org](http://www.galleryuccs.org).

### **30 Second Spot**

The Gallery of Contemporary Art, UCCS features the exhibition ***Dario Šolman: The Heart of Perspective, The Making of the Film***. Šolman, a Croatian artist living and working in New York, creates work that hints at a film that will never be made though storyboards, animation fragments, texts and drawings. The viewer has to piece the bits together while following Šolman's geometric protagonist as he searches for the heart of perspective. The exhibition runs February 22 - April 5, 2008 with a public reception February 22<sup>nd</sup> from 7 -9 p.m. For more information call 262-3567 or visit [www.galleryuccs.org](http://www.galleryuccs.org).

###

Images are available upon request. Please contact Christopher Lynn ([clynn@uccs.edu](mailto:clynn@uccs.edu) or [gallery@uccs.edu](mailto:gallery@uccs.edu)).

## **LOCATION AND INFORMATION**

---

The Gallery is located in the northwest corner of the Science Building's upper level. Parking is free on Saturdays. Weekdays, please park in the Visitor's Lot or metered spaces. Regular permit parking restrictions will be lifted for Lots 3 & 4 only during the exhibition's opening reception.

The Gallery of Contemporary Art, UCCS is open M-F 10-4 and Sa 1-4. The Gallery is closed on Sundays and regular University holidays.

For additional information concerning our exhibitions, programs, and membership, please call 719.262.3567 or visit our website: [www.galleryuccs.org](http://www.galleryuccs.org).

Gallery of Contemporary Art  
University of Colorado at Colorado Springs  
P.O. Box 7150  
1420 Austin Bluffs Parkway  
Colorado Springs, CO 80933-7150

// END //